

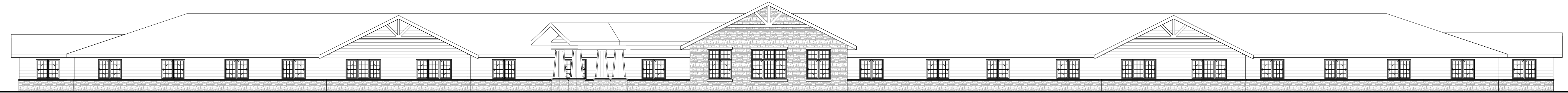


**Attn: City of Verona Planning Commission**

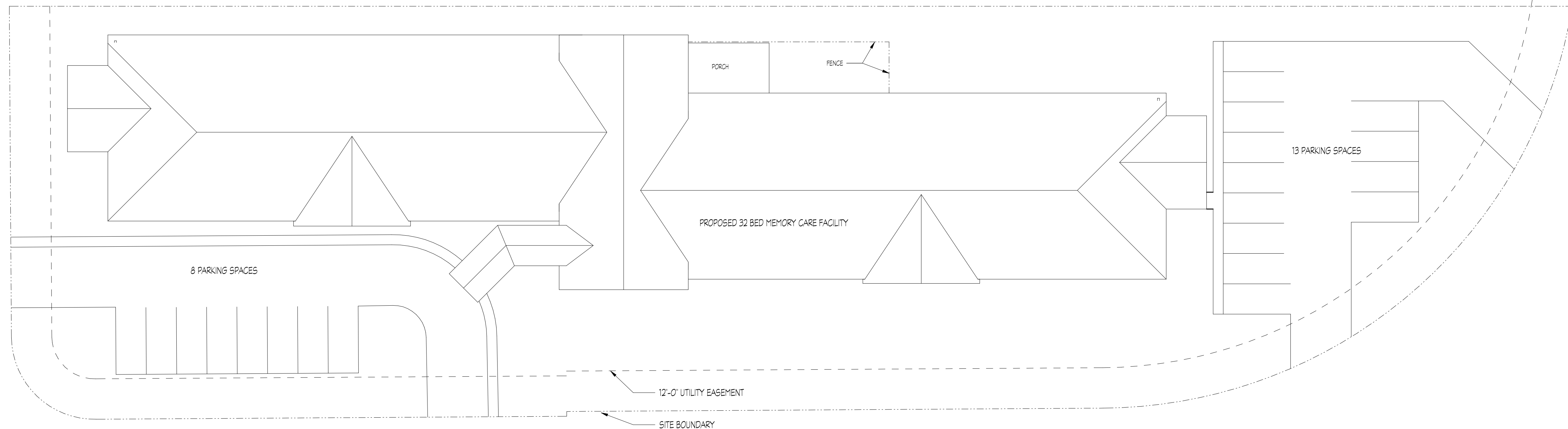
**The Legacy at Noel Manor  
Project Description**

The Legacy at Noel Manor is a proposed new build 32 unit - state of the art dementia/Alzheimer care facility. The building would be located next to Noel Manor Retirement Living at 471 Prairie Way Boulevard, Verona. Noel Manor Retirement Living currently provides 111 units of independent, assisted (RCAC) and memory care (CBRF) services to members of the community. The Legacy at Noel Manor would be licensed by the State of Wisconsin to provide class C non-ambulatory (CNA) services to its residents. CBRF class C non-ambulatory (CNA) licensure services residents who are ambulatory, semi-ambulatory, or non-ambulatory but one or more of whom are not physically or mentally capable of responding to a fire alarm. Essentially, our CBRF will provide memory and dementia care in a residential setting to individuals who can no longer live in the assisted living or home environment. The project will be operated by Park Vista Senior Housing Management, LLC, who is also the operator of Noel Manor Retirement Living. This project will allow Noel Manor to continue to be a continuum of care community/campus.

The Legacy at Noel Manor would be a 24 hour staffed building providing three meals a day and snacks, activities, services such as bathing and dressing, some transportation and tend to the daily needs the residents would have. Our current facility has a small memory care (CBRF) located in it, but there is already a long wait list to get into the available units. This new build would allow us to continue to offer excellent memory care services to many other members of the community.



1 FRONT ELEVATION  
3/32" = 1'-0"



2 SITE PLAN  
1/16" = 1'-0"